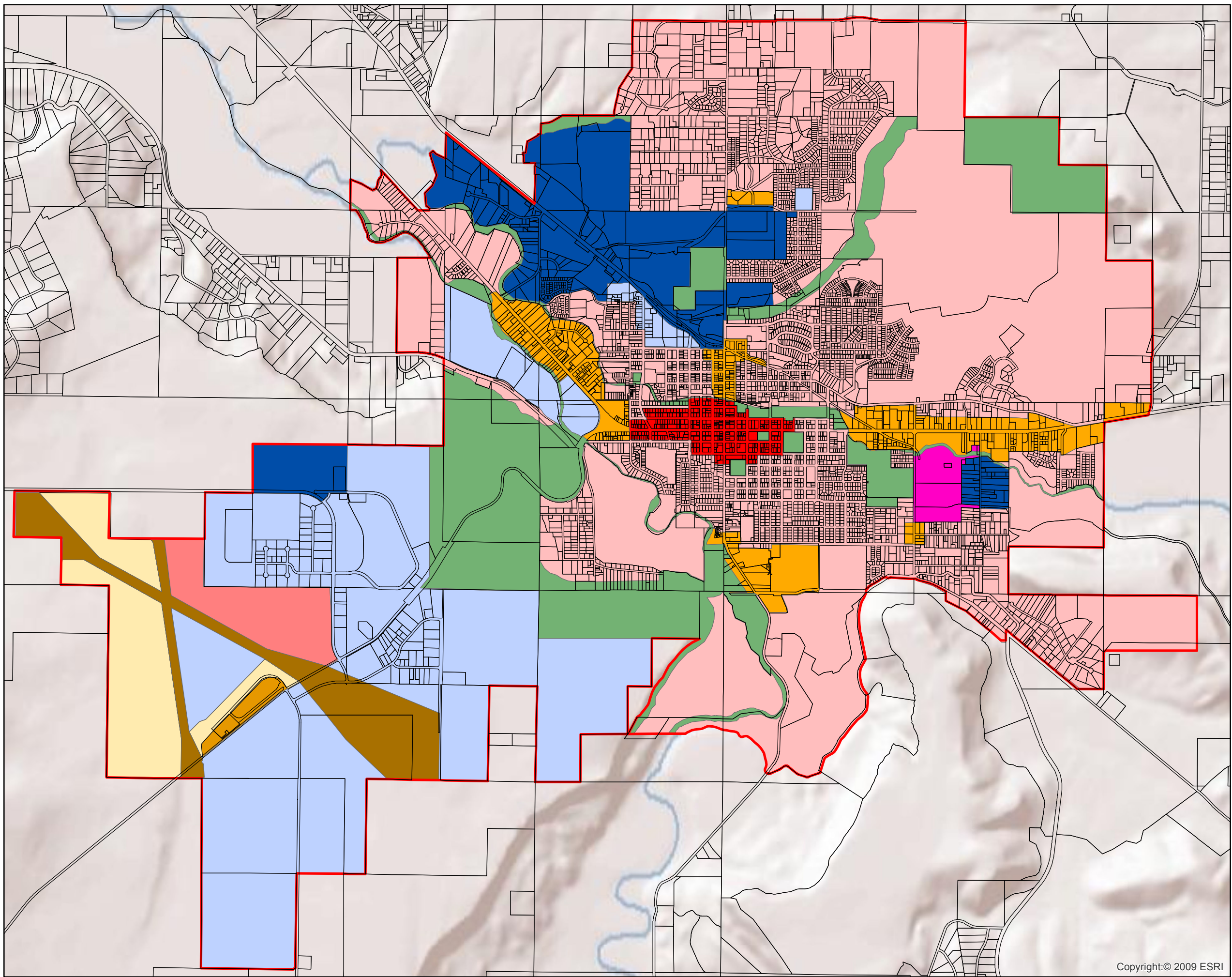


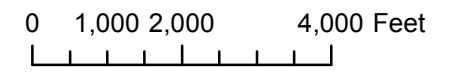
Comprehensive Plan Map Through 2014 Amendments



 UGB

City Comp Plan

-  AIRPORT APPROACH
-  AIRPORT BUSINESS INDUSTRIAL
-  AIRPORT COMMERCIAL
-  AIRPORT DEVELOPMENT
-  CORE COMMERCIAL
-  HEAVY INDUSTRIAL
-  LIGHT INDUSTRIAL
-  MIXED USE
-  OPEN SPACE
-  OUTLYING COMMERCIAL
-  RESIDENTIAL



Disclaimer: CROOK COUNTY MAKES NO WARRANTY OF ANY KIND, EXPRESSED OR IMPLIED, INCLUDING ANY WARRANTY OF MERCHANTABILITY, FITNESS FOR A PARTICULAR PURPOSE, OR ANY OTHER MATTER. THE COUNTY IS NOT RESPONSIBLE FOR POSSIBLE ERRORS, OMISSIONS, MISUSE, OR MISINTERPRETATION. COUNTY DIGITAL INFORMATION IS PREPARED FOR REFERENCE PURPOSES ONLY AND SHOULD NOT BE USED, AND IS NOT INTENDED FOR SURVEY OR ENGINEERING PURPOSES OR THE AUTHORETATIVE AND/OR PRECISE LOCATION OF BOUNDARIES, FIXED HUMAN WORKS, AND/OR THE SHAPE AND CONTOUR OF THE EARTH. NO REPRESENTATION IS MADE CONCERNING THE LEGAL STATUS OF ANY APPARENT ROUTE OF ACCESS IDENTIFIED IN DIGITAL OR HARDCOPY MAPPING OF GEOSPATIAL INFORMATION OR DATA. DATA FROM THE CROOK COUNTY ASSESSOR'S OFFICE MAY NOT BE CURRENT. DATA IS UPDATED AS SCHEDULES AND RESOURCES PERMIT. PLEASE NOTIFY CROOK COUNTY GIS OF ANY ERRORS (541) 416-3930.

