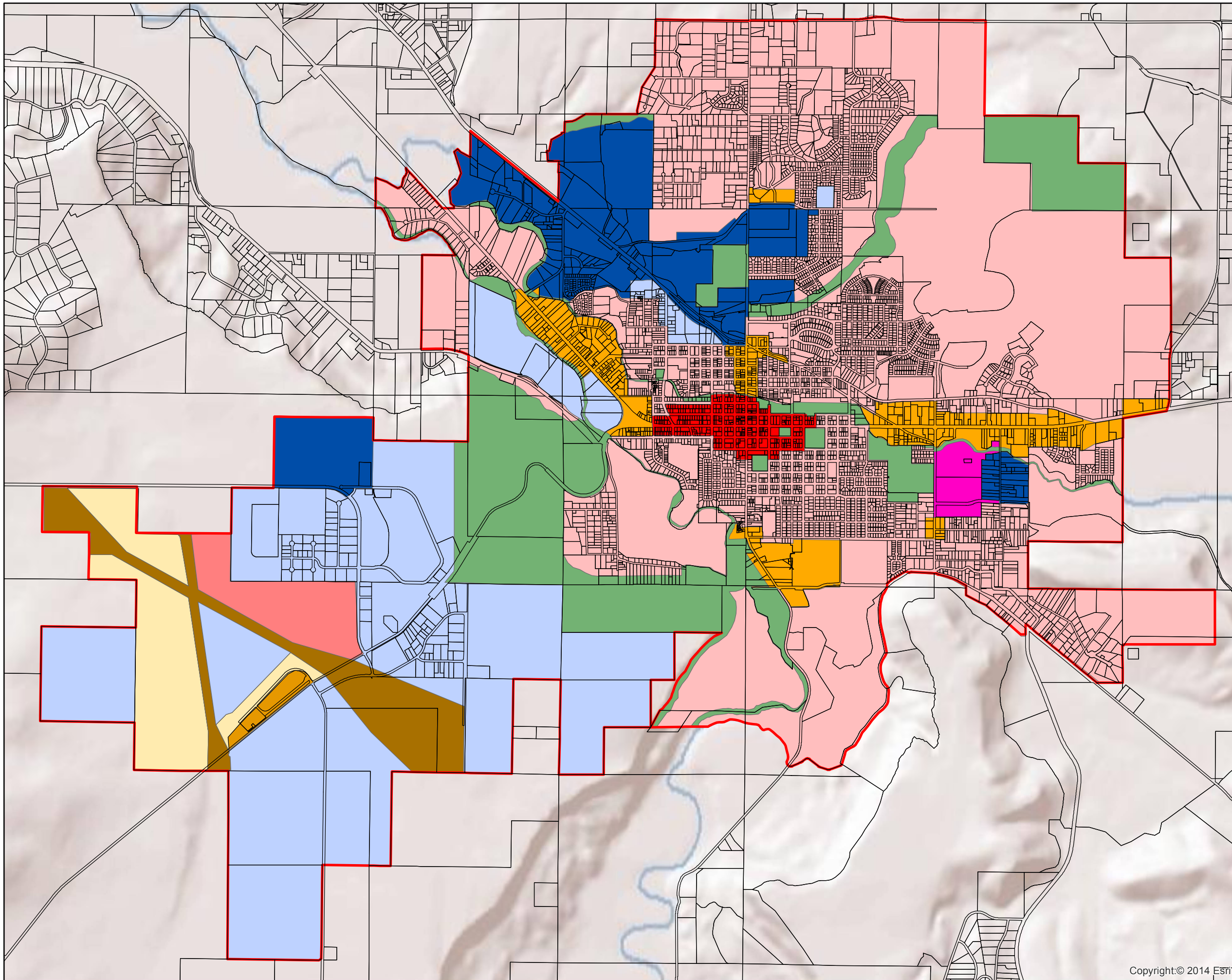
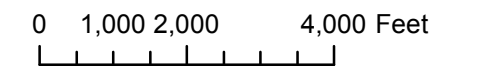


Comprehensive Plan Map Through 2017 Amendments

Application AM-2017-101
Resolution 1327



 Parcels
 UGB
City Comp Plan
 AIRPORT APPROACH
 AIRPORT BUSINESS INDUSTRIAL
 AIRPORT COMMERCIAL
 AIRPORT DEVELOPMENT
 CORE COMMERCIAL
 HEAVY INDUSTRIAL
 LIGHT INDUSTRIAL
 MIXED USE
 OPEN SPACE
 OUTLYING COMMERCIAL
 RESIDENTIAL



Disclaimer: CROOK COUNTY MAKES NO WARRANTY OF ANY KIND, EXPRESSED OR IMPLIED, INCLUDING ANY WARRANTY OF MERCHANTABILITY, FITNESS FOR A PARTICULAR PURPOSE, OR ANY OTHER MATTER. THE COUNTY IS NOT RESPONSIBLE FOR POSSIBLE ERRORS, OMISSIONS, MISUSE, OR MISINTERPRETATION. COUNTY DIGITAL INFORMATION IS PREPARED FOR REFERENCE PURPOSES ONLY AND SHOULD NOT BE USED, AND IS NOT INTENDED FOR SURVEY OR ENGINEERING PURPOSES OR THE AUTHORITATIVE AND/OR PRECISE LOCATION OF BOUNDARIES, FIXED HUMAN WORKS, AND/OR THE SHAPE AND CONTOUR OF THE EARTH. NO REPRESENTATION IS MADE CONCERNING THE LEGAL STATUS OF ANY APPARENT ROUTE OF ACCESS IDENTIFIED IN DIGITAL OR HARDCOPY MAPPING OF GEOSPATIAL INFORMATION OR DATA FROM THE CROOK COUNTY ASSESSOR'S OFFICE MAY NOT BE CURRENT. DATA IS UPDATED AS SCHEDULES AND RESOURCES PERMIT. PLEASE NOTIFY CROOK COUNTY GIS OF ANY ERRORS (541) 416-3930.

